

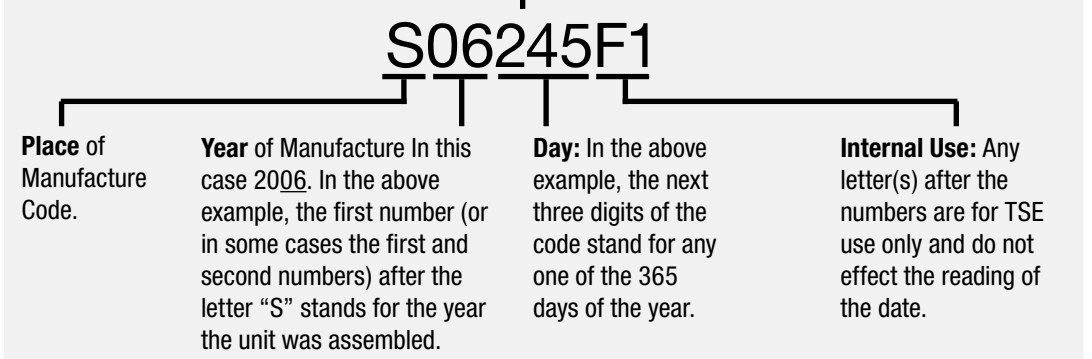
TSE Air Brake Actuator Product Selection Guide

omni brake	ultra life+	Description	B Dim.	Caged Y/N
TSE Generic Will-Fit Units				
		2024TN2-C	7.75"	N
		2424TN2-C	7.75"	N
		2430TN2-C	7.85"	N
		2430TN3-C	7.25"	N
		3030TN2	7.85"	N
		3030TN2-C	7.85"	N
		3030TN3	7.35"	N
		3030TN3-C	7.35"	N
		3036TN2-C	7.80"	N
		3036TN3-C	7.30"	N
		3636TN3-C	7.25"	N
Intermodal				
		3030TN2-C	7.85"	N
		3030TN3-C	7.35"	N
		3030TL3-4158	5.75"	Y
		3030TL2-4185	5.75"	Y
VCT Variable Clocking Technology (VCT) Piggyback Kits				
		3030SV2K	—	Y
		3030SV3K	—	Y
3030 Direct Fit Units (Clamped + Threaded Rod)				
		3030TN2-3512	5.75"	Y
		3030TN3-2390	5.75"	Y
		3030TN2-HNTRX-C	9.75"	N
		3030TN3-HNTRX-C	9.75"	N
VCT Variable Clocking Technology (VCT) Direct Fit (Clamped + Threaded Rod)				
		3030TV2-HNTRX	9.75"	Y
		3030TV3-HNTRX	9.75"	Y
3030 Direct Fit Units (Tamper Proof + Pre Cut Threaded Rod)				
		3030TL2-2401	5.75"	Y
		3030TL3-3265	5.75"	Y
		3030TL2-2412	9.75"	Y
		3030TL3-2517	9.75"	Y
Tandem with Clevis for Truck & Trailer Application				
		3030TL2ULP-80026	5.75"	Y
		3030TL3ULP-80011	5.75"	Y
		3030TL2ULP-80031	9.75"	Y
		3030TL3ULP-80017	9.75"	Y
3030 Direct Fit Units (Tamper Proof + Welded Clevis)				
		3030TLW2-4019	6.80"	Y
		3030TLW3-4020	6.80"	Y
Tandem with Welded Clevis for Truck and Trailer Application				
		3030TNW2-2998	2.25"	Y
		3030TNW3-2273	2.25"	Y
		3030TNW2-3612	2.87"	Y
		3030TNW3-3611	2.87"	Y
		3030TNW2-3613	6.80"	Y
		3030TNW3-3615	6.80"	Y
		3030TNW2-3614	11.00"	Y
		3030TNW3-3616	11.00"	Y



omni brake	ultra life+	Description	B Dim.	Caged Y/N
VCT Variable Clocking Technology (VCT) Tandem with Welded Clevis for Truck Applications				
		3030TVW3-4200	2.25"	Y
Remote Chambers				
		30RPC2	6.57"	N
		30RPC3	6.20"	N
Service Chambers				
		12SCN0-C	8.55"	N
		16SCN1-C	8.05"	N
		20SCN1-C	8.00"	N
		20SCN2-C	7.75"	N
		24SCN2-C	7.75"	N
		24SCN3-C	7.15"	N
		30SCN2-C	7.75"	N
		30SCN2-HNTRX-C	9.75"	N
		30SCN3-C	7.30"	N
		36SCN3-C	7.20"	N
Service Chambers with Welded Clevis				
		20SCLW2	2.25"	N
		24SCLW2	2.25"	N
		24SCLW3	2.25"	N
		30SCLW3	2.25"	N
Service Chambers (Tamper Proof + Welded Clevis for Dollies)				
		30SCLW2-4087	6.80"	N
		30SCLW3-4082	6.80"	N

How To Read The TSE Date Code Marked On Each Unit



ultra life+



UltraLife + takes durability to a new level with Sealed When It Counts™ pressure seal, enhanced urethane coating, and pressure relief dust cap.

hot high output technology



The first double-diaphragm chamber used worldwide for disc brake applications, TSE's High Output Technology (HOT) chamber is a proven alternative to piston type disc brakes.

omni brake



OmniBrake is a superior OEM preferred design for standard S-Cam drum brake or disc brake applications.

ul disc with HOT (High Output Technology)



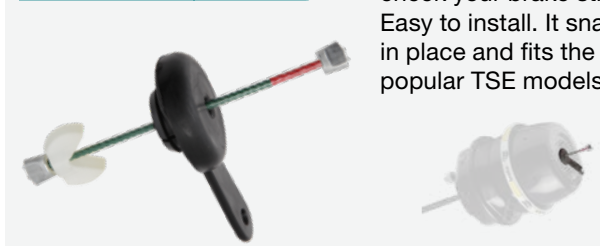
Features an All-n-One™ self guided recessed pressure plate. Diaphragms are factory sealed assuring proper alignment. Discs also features a composite port adapter that reduces profile size and provides easy installation.

vct variable clocking technology



VCT is a factory sealed diaphragm on a Variable Clocking Technology (VCT) Unit. This innovative design saves time and money. It also reduces potential for incorrect installations!

visi-chek visual brake stroke indicator



Now you can visually check your brake stroke. Easy to install. It snaps in place and fits the most popular TSE models.

TSE-REX rapid exchange push rods



TSE-REX Rapid EXchange Push rods helps reduce inventory and installation costs. Rod kits cover virtually every threaded or clevis air brake actuator application.

hot high output technology



omni brake	ultra life+	Description	Caged Y/N
hot high output technology Tandem Chambers For Air Disc Brake			
1616HTLD2-3627	—	For 1616 Piston Or 1624 Double Diaphragm	Y
1816HTND2-3669	1816HTND2UL-4312	For 1816 Piston Or 1824 Double Diaphragm	Y
2016HTND2-3710	2016HTND2UL-4313	For 2016 Piston Or 2024 Double Diaphragm	Y
1824HTND2-3628	—	For 1824 Piston Or 1830 Double Diaphragm	Y
hot high output technology Tandem Chambers For Air Disc Brake			
2024HTND2-3626	—	For 2024 Piston Or 2030 Double Diaphragm	Y
2424HTND2-3629	—	For 2424 Piston Or 2430 Double Diaphragm	Y
Service Chambers for Air Disc Brake			
18HSCND2-4026	—	T- 18 Disc 2.5" stroke	Y
20HSCND2-3630	—	T-20 Disc 2.5" stroke	Y
22HSCND2-3631	—	T-22 Disc 2.5" stroke	Y
24HSCND2-3632	—	T-24 Disc 2.5" stroke	Y
UL-Disc Hot UL Air Disc Brake with Port Adapter			
—	1824TLD2HUL-4249	For 1816 Piston Or 1824 Double Diaphragm, 2.5" stroke, road side	Y
—	1824TLD2HUL-4250	For 1816 Piston Or 1824 Double Diaphragm, 2.5" stroke, curb side	Y
TSE-REX Rapid Exchange Push Rods			
3030TVR2	3030TVR2ULP	VCT T-3030 2.5" stroke (T-REX)	Y
3030TVR3	3030TVR3ULP	VCT T-3030 3.0" stroke (T-REX)	Y

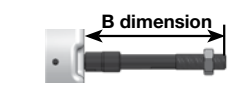
hot high output technology



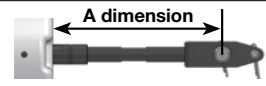
ul disc



TSE-REX Rapid Exchange Push Rod Kits



Single Kit Models	Box Color Code	Description	Typical Applications	Works with the following Auto-Slack brands & models*
Push rod kits - Threaded includes jam nut installed				
K575	Gold	5.75" B dimension threaded Rod	Standard 5" trailer axle	All
K631	Silver	6.31" B dimension threaded Rod	SAF axle	
K706	Purple	7.06" B dimension threaded Rod	Meritor large diameter axle	
K975	Green	9.75" B dimension threaded Rod	Intraax/Vantraax	
K150	None	15.0" B dimension threaded Rod	Universal fully threaded	



Push rod kits - Fixed Clevis includes stainless steel pins and cotters installed				
K225-130	None	2.25" A dimension Fixed Clevis with 1.3" pin spacing	Truck welded clevis	1, 3, 4, 6, 8
K680-102	Orange	6.80" A dimension Fixed Clevis with 1.02 pin spacing	Standard 5" Axle Gunite Slack	1, 2
K680-130	Yellow	6.80" A dimension Fixed Clevis with 1.3" pin spacing	Standard 5" Axle	1, 3, 4, 6, 8
K680-138	White	6.80" A dimension Fixed Clevis with 1.38" pin spacing	Standard 5" trailer axle Meritor, Stemco slack	1, 5, 7
K110-130	Brown	11.0" A dimension Fixed Clevis with 1.3" pin spacing	Intraax/Vantraax	1, 3, 4, 6, 8
K110-138	Blue	11.0" A dimension Fixed Clevis with 1.38" pin spacing	Intraax/Vantraax Meritor, Stemco slack	1, 5, 7

***Auto-Slack Notes:**
 1. TSE/Webb/MEI/Haldex (0.5" pin)
 2. Gunite 1000 series 1.02" pin spacing
 3. Gunite 2000 series 1.3" pin spacing
 4. Meritor 1.3" pin spacing (Truck)
 5. Meritor 1.38" pin spacing (Trailer)
 6. Stemco 1.3" pin spacing
 7. Stemco 1.38" pin spacing
 8. Bendix Versajust
 OEM names are used for reference purposes only.

To Go Where No Air Brake Actuator Has Gone Before



256-736-6275
 www.TSEbrakes.com
 TSE Brakes, Inc.
 2310 Industrial Drive S.W.
 Cullman, Alabama 35055



The global leader in spring brake design, innovation, technology and performance!